

## One way pallet



**NLT 1012 NR**  
SIZE( WxLxH ) 1000\*1200\*130 mm.  
Static Load : 1000 kg  
Dynamic Load : 1000 (wrapping) kg  
Racking Load : N/A

4 way 4 way 4 way



**NLV 1012 NR**  
SIZE( WxLxH ) 1000\*1200\*133 mm.  
Static Load : 1500 kg  
Dynamic Load : 1000 (wrapping) kg  
800 (w/o wrapping) kg  
Racking Load : N/A

4 way 4 way 4 way



**NLS 1012 NR**  
SIZE( WxLxH ) 1000\*1200\*133 mm.  
Static Load : 1500 kg  
Dynamic Load : 1000 (wrapping) kg  
800 (w/o wrapping) kg  
Racking Load : N/A

4 way 4 way 4 way



**SLV 1012 NR**  
SIZE( WxLxH ) 1000\*1200\*148 mm.  
Static Load : 2000 kg  
Dynamic Load : 1000 (wrapping) kg  
1000 (w/o wrapping) kg  
Racking Load : Up to 300

4 way 2 way 2 way



**SLS 1012 NR**  
SIZE( WxLxH ) 1000\*1200\*148 mm.  
Static Load : 2000 kg  
Dynamic Load : 1000 (wrapping) kg  
1000 (w/o wrapping) kg  
Racking Load : Up to 300

4 way 2 way 2 way



**BLS 1010 SH**  
SIZE( WxLxH ) 1050\*1050\*90 mm.  
Static Load : 2500 kg  
Dynamic Load : 2000 (wrapping) kg  
1000 (w/o wrapping) kg  
Racking Load : N/A

2 way N/A N/A



**BLS 1012 SH**  
SIZE( WxLxH ) 1050\*1200\*90 mm.  
Static Load : 2500 kg  
Dynamic Load : 2000 (wrapping) kg  
1000 (w/o wrapping) kg  
Racking Load : N/A

2 way N/A N/A



**BLS 1112 SH**  
SIZE( WxLxH ) 1100\*1200\*90 mm.  
Static Load : 2500 kg  
Dynamic Load : 2000 (wrapping) kg  
1000 (w/o wrapping) kg  
Racking Load : N/A

2 way N/A N/A



**BLS 1111 SH**  
SIZE( WxLxH ) 1100\*1100\*90 mm.  
Static Load : 2500 kg  
Dynamic Load : 2000 (wrapping) kg  
1000 (w/o wrapping) kg  
Racking Load : N/A

2 way N/A N/A



**BLS 1212 SH**  
SIZE( WxLxH ) 1200\*1200\*90 mm.  
Static Load : 2500 kg  
Dynamic Load : 2000 (wrapping) kg  
1000 (w/o wrapping) kg  
Racking Load : N/A

2 way N/A N/A



**BLS 1010 MH**  
SIZE( WxLxH ) 1050\*1050\*130 mm.  
Static Load : 2000 kg  
Dynamic Load : 1000 (wrapping) kg  
800 (w/o wrapping) kg  
Racking Load : N/A

4 way 2 way 2 way



**BLS 1012 MH**  
SIZE( WxLxH ) 1050\*1200\*130 mm.  
Static Load : 2000 kg  
Dynamic Load : 1000 (wrapping) kg  
800 (w/o wrapping) kg  
Racking Load : N/A

4 way 2 way 2 way



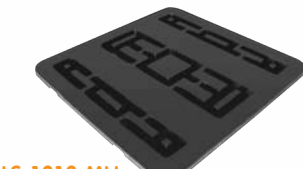
**BLS 1112 MH**  
SIZE( WxLxH ) 1100\*1200\*130 mm.  
Static Load : 2000 kg  
Dynamic Load : 1000 (wrapping) kg  
800 (w/o wrapping) kg  
Racking Load : N/A

4 way 2 way 2 way



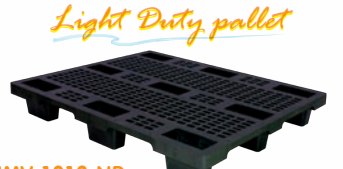
**BLS 1111 MH**  
SIZE( WxLxH ) 1100\*1100\*130 mm.  
Static Load : 2000 kg  
Dynamic Load : 1000 (wrapping) kg  
800 (w/o wrapping) kg  
Racking Load : N/A

4 way 2 way 2 way



**BLS 1212 MH**  
SIZE( WxLxH ) 1200\*1200\*130 mm.  
Static Load : 2000 kg  
Dynamic Load : 1000 (wrapping) kg  
800 (w/o wrapping) kg  
Racking Load : N/A

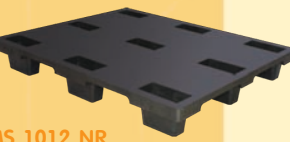
4 way 2 way 2 way



**NMV 1012 NR**  
SIZE( WxLxH ) 1000\*1200\*160 mm.  
Static Load : 3000 kg  
Dynamic Load : 1500 (wrapping) kg  
1000 (w/o wrapping) kg  
Racking Load : N/A

4 way 4 way 4 way

## Light Duty pallet



**NMS 1012 NR**  
SIZE( WxLxH ) 1000\*1200\*160 mm.  
Static Load : 3000 kg  
Dynamic Load : 1500 (wrapping) kg  
1000 (w/o wrapping) kg  
Racking Load : N/A

4 way 4 way 4 way



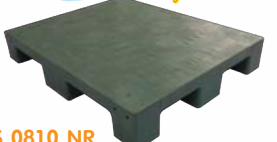
**SMV 1012 NR**  
SIZE( WxLxH ) 1000\*1200\*175 mm.  
Static Load : 3500 kg  
Dynamic Load : 2000 (wrapping) kg  
1000 (w/o wrapping) kg  
Racking Load : Up to 600

4 way 2 way 2 way



**SMS 1012 NR**  
SIZE( WxLxH ) 1000\*1200\*175 mm.  
Static Load : 3500 kg  
Dynamic Load : 2000 (wrapping) kg  
1000 (w/o wrapping) kg  
Racking Load : Up to 600

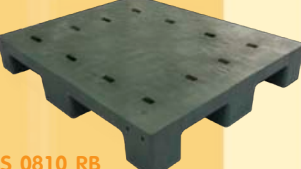
4 way 2 way 2 way



**PMS 0810 NR**  
SIZE( WxLxH ) 800\*1000\*150 mm.  
Static Load : 4500 kg  
Dynamic Load : 1000 kg  
Racking Load : 300

4 way 4 way 4 way

## Medium Duty pallet



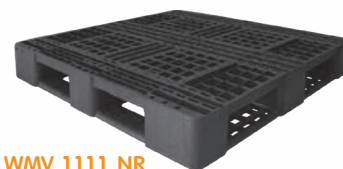
**PMS 0810 RB**  
SIZE( WxLxH ) 800\*1000\*150 mm.  
Static Load : 4500 kg  
Dynamic Load : 1000 kg  
Racking Load : 300

4 way 4 way 4 way



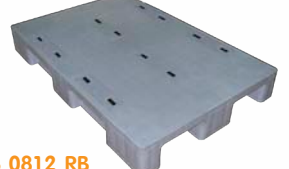
**WMV 1012 NR**  
SIZE( WxLxH ) 1000\*1200\*160 mm.  
Static Load : 5000 kg  
Dynamic Load : 1500 kg  
Racking Load : 850

4 way 4 way No



**WMV 1111 NR**  
SIZE( WxLxH ) 1100\*1100\*160 mm.  
Static Load : 5000 kg  
Dynamic Load : 1500 kg  
Racking Load : 850

4 way 4 way No



**EMS 0812 RB**  
SIZE( WxLxH ) 800\*1200\*150 mm.  
Static Load : 4500 kg  
Dynamic Load : 1500 kg  
Racking Load : 600

4 way 2 way 2 way

## Medium Duty pallet



**EMS 0812 FT**

SIZE( WxLxH ) 800\*1200\*150 mm.  
 Static Load : 4500 kg  
 Dynamic Load : 1500 kg  
 Racking Load : 600 kg

4 way 2 way 2 way



**EMS 1012 FT**

SIZE( WxLxH ) 1000\*1200\*150 mm.  
 Static Load : 4500 kg  
 Dynamic Load : 1500 kg  
 Racking Load : 600 kg

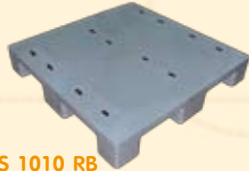
4 way 2 way 2 way



**BMS 1012 LH**

SIZE( WxLxH ) 1050\*1200\*175 mm.  
 Static Load : 3000 kg  
 Dynamic Load : 2000 kg  
 Racking Load : N/A

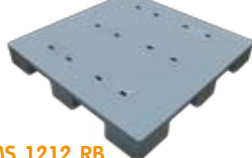
2 way N/A N/A



**EMS 1010 RB**

SIZE( WxLxH ) 1000\*1000\*150 mm.  
 Static Load : 4500 kg  
 Dynamic Load : 1500 kg  
 Racking Load : 600 kg

4 way 2 way 2 way



**EMS 1212 RB**

SIZE( WxLxH ) 1200\*1200\*150 mm.  
 Static Load : 4500 kg  
 Dynamic Load : 1500 kg  
 Racking Load : 600 kg

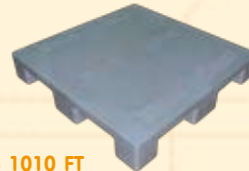
4 way 2 way 2 way



**BMS 1112 LH**

SIZE( WxLxH ) 1100\*1200\*175 mm.  
 Static Load : 3000 kg  
 Dynamic Load : 2000 kg  
 Racking Load : N/A

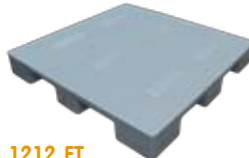
2 way N/A N/A



**EMS 1010 FT**

SIZE( WxLxH ) 1000\*1000\*150 mm.  
 Static Load : 4500 kg  
 Dynamic Load : 1500 kg  
 Racking Load : 600 kg

4 way 2 way 2 way



**EMS 1212 FT**

SIZE( WxLxH ) 1200\*1200\*150 mm.  
 Static Load : 4500 kg  
 Dynamic Load : 1500 kg  
 Racking Load : 600 kg

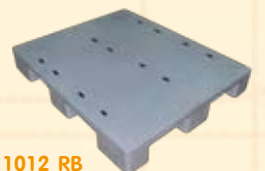
4 way 2 way 2 way



**BMS 1111 LH**

SIZE( WxLxH ) 1100\*1100\*175 mm.  
 Static Load : 3000 kg  
 Dynamic Load : 2000 kg  
 Racking Load : N/A

2 way N/A N/A



**EMS 1012 RB**

SIZE( WxLxH ) 1000\*1200\*150 mm.  
 Static Load : 4500 kg  
 Dynamic Load : 1500 kg  
 Racking Load : 600 kg

4 way 2 way 2 way



**BMS 1010 LH**

SIZE( WxLxH ) 1050\*1050\*175 mm.  
 Static Load : 3000 kg  
 Dynamic Load : 2000 kg  
 Racking Load : N/A

2 way N/A N/A



**BMS 1212 LH**

SIZE( WxLxH ) 1200\*1200\*175 mm.  
 Static Load : 3000 kg  
 Dynamic Load : 2000 kg  
 Racking Load : N/A

2 way N/A N/A

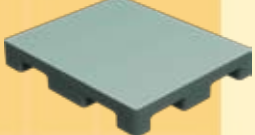
## Heavy Duty pallet



**EHT 1012 RB**

SIZE( WxLxH ) 1000\*1200\*170 mm.  
 Static Load : 6000 kg  
 Dynamic Load : 2000 kg  
 Racking Load : 1000 kg

4 way 2 way 2 way



**PHS 1012 FT**

SIZE( WxLxH ) 1000\*1200\*170 mm.  
 Static Load : 7000 kg  
 Dynamic Load : 2000 kg  
 Racking Load : 700 kg

4 way 4 way 4 way



**GHV 1012 RB**

SIZE( WxLxH ) 1000\*1200\*170 mm.  
 Static Load : 7000 kg  
 Dynamic Load : 2000 kg  
 Racking Load : 1100 kg

4 way 2 way 2 way



**DHV 1113 RB**

SIZE( WxLxH ) 1100\*1350\*165 mm.  
 Static Load : 7000 kg  
 Dynamic Load : 2000 kg  
 Racking Load : 1000 kg

4 way N/A N/A



**EHT 1212 RB**

SIZE( WxLxH ) 1200\*1200\*170 mm.  
 Static Load : 6000 kg  
 Dynamic Load : 2000 kg  
 Racking Load : 1000 kg

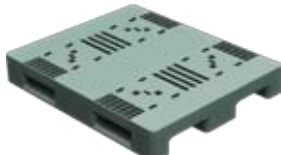
4 way 2 way 2 way



**PHV 1212 RB**

SIZE( WxLxH ) 1200\*1200\*170 mm.  
 Static Load : 7000 kg  
 Dynamic Load : 2000 kg  
 Racking Load : 700 kg

4 way 4 way 4 way



**GHS 1012 RB**

SIZE( WxLxH ) 1000\*1200\*170 mm.  
 Static Load : 7000 kg  
 Dynamic Load : 2000 kg  
 Racking Load : 1100 kg

4 way 2 way 2 way



**DHS 1113 RB**

SIZE( WxLxH ) 1100\*1350\*165 mm.  
 Static Load : 7000 kg  
 Dynamic Load : 2000 kg  
 Racking Load : 1000 kg

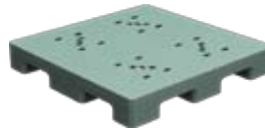
4 way N/A N/A



**PHV 1012 RB**

SIZE( WxLxH ) 1000\*1200\*170 mm.  
 Static Load : 7000 kg  
 Dynamic Load : 2000 kg  
 Racking Load : 700 kg

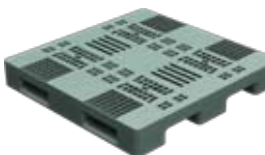
4 way 4 way 4 way



**PHS 1212 RB**

SIZE( WxLxH ) 1200\*1200\*170 mm.  
 Static Load : 7000 kg  
 Dynamic Load : 2000 kg  
 Racking Load : 700 kg

4 way 4 way 4 way



**GHV 1212 RB**

SIZE( WxLxH ) 1200\*1200\*170 mm.  
 Static Load : 7000 kg  
 Dynamic Load : 2000 kg  
 Racking Load : 1100 kg

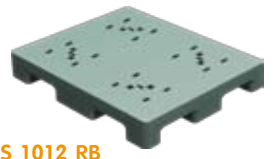
4 way 2 way 2 way



**EHS 1113 CH**

SIZE( WxLxH ) 1100\*1350\*165 mm.  
 Static Load : 4500 kg  
 Dynamic Load : 1500 kg  
 Racking Load : 800 kg

4 way 2 way 2 way



**PHS 1012 RB**

SIZE( WxLxH ) 1000\*1200\*170 mm.  
 Static Load : 7000 kg  
 Dynamic Load : 2000 kg  
 Racking Load : 700 kg

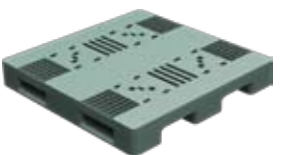
4 way 4 way 4 way



**PHS 1212 FT**

SIZE( WxLxH ) 1200\*1200\*170 mm.  
 Static Load : 7000 kg  
 Dynamic Load : 2000 kg  
 Racking Load : 700 kg

4 way 4 way 4 way



**GHS 1212 RB**

SIZE( WxLxH ) 1200\*1200\*170 mm.  
 Static Load : 7000 kg  
 Dynamic Load : 2000 kg  
 Racking Load : 1100 kg

4 way 2 way 2 way

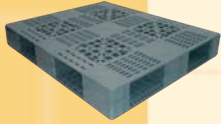


**EHS 1113 CL**

SIZE( WxLxH ) 1100\*1350\*165 mm.  
 Static Load : 4500 kg  
 Dynamic Load : 1500 kg  
 Racking Load : 800 kg

4 way 2 way 2 way

# Heavy Duty pallet



Item no	Size WxLxH(mm.)	Static (kgs)	Dynamic (kgs)	Racking (kgs)
DHV 1012 RB	1000x1200x150	6000	2000	800
DHV 1112 RB	1100x1200x150	6000	2000	800
DHV 1212 RB	1200x1200x150	6000	2000	800

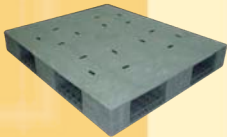
4 way N/A N/A



## Steel Reinforcement

Item no	Size WxLxH(mm.)	Static (kgs)	Dynamic (kgs)	Racking (kgs)
WHV 1012 SS	1000x1200x150	6500	2000	1200
WHV 1112 SS	1100x1200x150	6500	2000	1200
WHV 1212 SS	1200x1200x150	6500	2000	1200

4 way 4 way N/A



Item no	Size WxLxH(mm.)	Static (kgs)	Dynamic (kgs)	Racking (kgs)
DHS 1012 RB	1000x1200x150	6000	2000	800
DHS 1112 RB	1100x1200x150	6000	2000	800
DHS 1212 RB	1200x1200x150	6000	2000	800

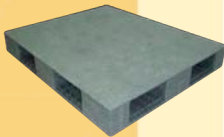
4 way N/A N/A



## Steel Reinforcement

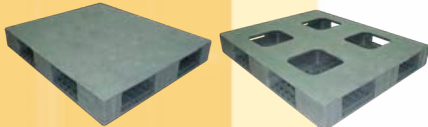
Item no	Size WxLxH(mm.)	Static (kgs)	Dynamic (kgs)	Racking (kgs)
WHS 1012 SS	1000x1200x150	6500	2000	1200
WHS 1112 SS	1100x1200x150	6500	2000	1200
WHS 1212 SS	1200x1200x150	6500	2000	1200

4 way 4 way N/A



Item no	Size WxLxH(mm.)	Static (kgs)	Dynamic (kgs)	Racking (kgs)
DHL 1012 FT	1000x1200x150	6000	2000	800
DHL 1112 FT	1100x1200x150	6000	2000	800
DHL 1212 FT	1200x1200x150	6000	2000	800

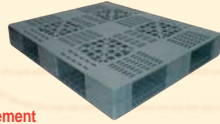
4 way N/A N/A



## Steel Reinforcement

Item no	Size WxLxH(mm.)	Static (kgs)	Dynamic (kgs)	Racking (kgs)
WHL 1012 SS	1000x1200x150	6500	2000	1200
WHL 1112 SS	1100x1200x150	6500	2000	1200
WHL 1212 SS	1200x1200x150	6500	2000	1200

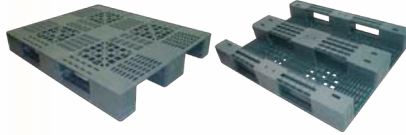
4 way 4 way N/A



## Steel Reinforcement

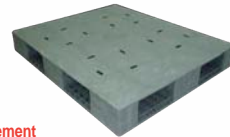
Item no	Size WxLxH(mm.)	Static (kgs)	Dynamic (kgs)	Racking (kgs)
DHV 1012 SS	1000x1200x150	6500	2000	1200
DHV 1112 SS	1100x1200x150	6500	2000	1200
DHV 1212 SS	1200x1200x150	6500	2000	1200

4 way N/A N/A



Item no	Size WxLxH(mm.)	Static (kgs)	Dynamic (kgs)	Racking (kgs)
EHV 1012 RB	1000x1200x150	6000	1500	800
EHV 1112 RB	1100x1200x150	6000	1500	800
EHV 1212 RB	1200x1200x150	6000	1500	800

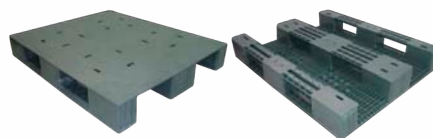
4 way 2 way 2 way



## Steel Reinforcement

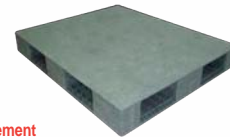
Item no	Size WxLxH(mm.)	Static (kgs)	Dynamic (kgs)	Racking (kgs)
DHS 1012 SS	1000x1200x150	6500	2000	1200
DHS 1112 SS	1100x1200x150	6500	2000	1200
DHS 1212 SS	1200x1200x150	6500	2000	1200

4 way N/A N/A



Item no	Size WxLxH(mm.)	Static (kgs)	Dynamic (kgs)	Racking (kgs)
EHS 1012 RB	1000x1200x150	6000	1500	800
EHS 1112 RB	1100x1200x150	6000	1500	800
EHS 1212 RB	1200x1200x150	6000	1500	800

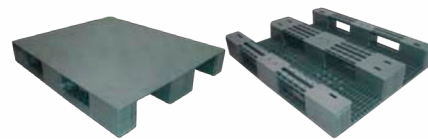
4 way 2 way 2 way



## Steel Reinforcement

Item no	Size WxLxH(mm.)	Static (kgs)	Dynamic (kgs)	Racking (kgs)
DHL 1012 SS	1000x1200x150	6500	2000	1200
DHL 1112 SS	1100x1200x150	6500	2000	1200
DHL 1212 SS	1200x1200x150	6500	2000	1200

4 way N/A N/A



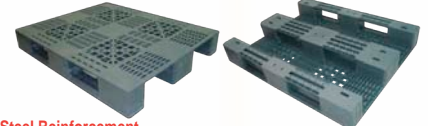
Item no	Size WxLxH(mm.)	Static (kgs)	Dynamic (kgs)	Racking (kgs)
EHL 1012 FT	1000x1200x150	6000	1500	800
EHL 1112 FT	1100x1200x150	6000	1500	800
EHL 1212 FT	1200x1200x150	6000	1500	800

4 way 2 way 2 way



Item no	Size WxLxH(mm.)	Static (kgs)	Dynamic (kgs)	Racking (kgs)
WHV 1012 RB	1000x1200x150	6000	2000	800
WHV 1112 RB	1100x1200x150	6000	2000	800
WHV 1212 RB	1200x1200x150	6000	2000	800

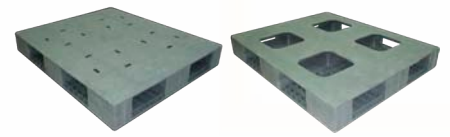
4 way 4 way N/A



## Steel Reinforcement

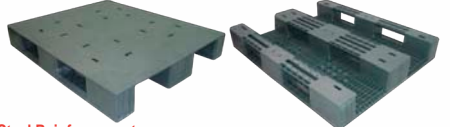
Item no	Size WxLxH(mm.)	Static (kgs)	Dynamic (kgs)	Racking (kgs)
EHV 1012 SS	1000x1200x150	6500	1500	1200
EHV 1112 SS	1100x1200x150	6500	1500	1200
EHV 1212 SS	1200x1200x150	6500	1500	1200

4 way 2 way 2 way



Item no	Size WxLxH(mm.)	Static (kgs)	Dynamic (kgs)	Racking (kgs)
WHS 1012 RB	1000x1200x150	6000	2000	800
WHS 1112 RB	1100x1200x150	6000	2000	800
WHS 1212 RB	1200x1200x150	6000	2000	800

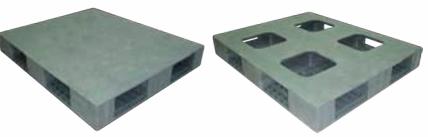
4 way 4 way N/A



## Steel Reinforcement

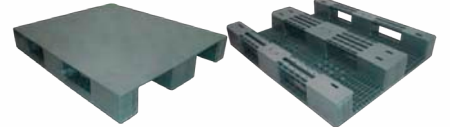
Item no	Size WxLxH(mm.)	Static (kgs)	Dynamic (kgs)	Racking (kgs)
EHS 1012 SS	1000x1200x150	6500	1500	1200
EHS 1112 SS	1100x1200x150	6500	1500	1200
EHS 1212 SS	1200x1200x150	6500	1500	1200

4 way 2 way 2 way



Item no	Size WxLxH(mm.)	Static (kgs)	Dynamic (kgs)	Racking (kgs)
WHL 1012 FT	1000x1200x150	6000	2000	800
WHL 1112 FT	1100x1200x150	6000	2000	800
WHL 1212 FT	1200x1200x150	6000	2000	800

4 way 4 way N/A



## Steel Reinforcement

Item no	Size WxLxH(mm.)	Static (kgs)	Dynamic (kgs)	Racking (kgs)
EHL 1012 SS	1000x1200x150	6500	1500	1200
EHL 1112 SS	1100x1200x150	6500	1500	1200
EHL 1212 SS	1200x1200x150	6500	1500	1200

4 way 2 way 2 way